

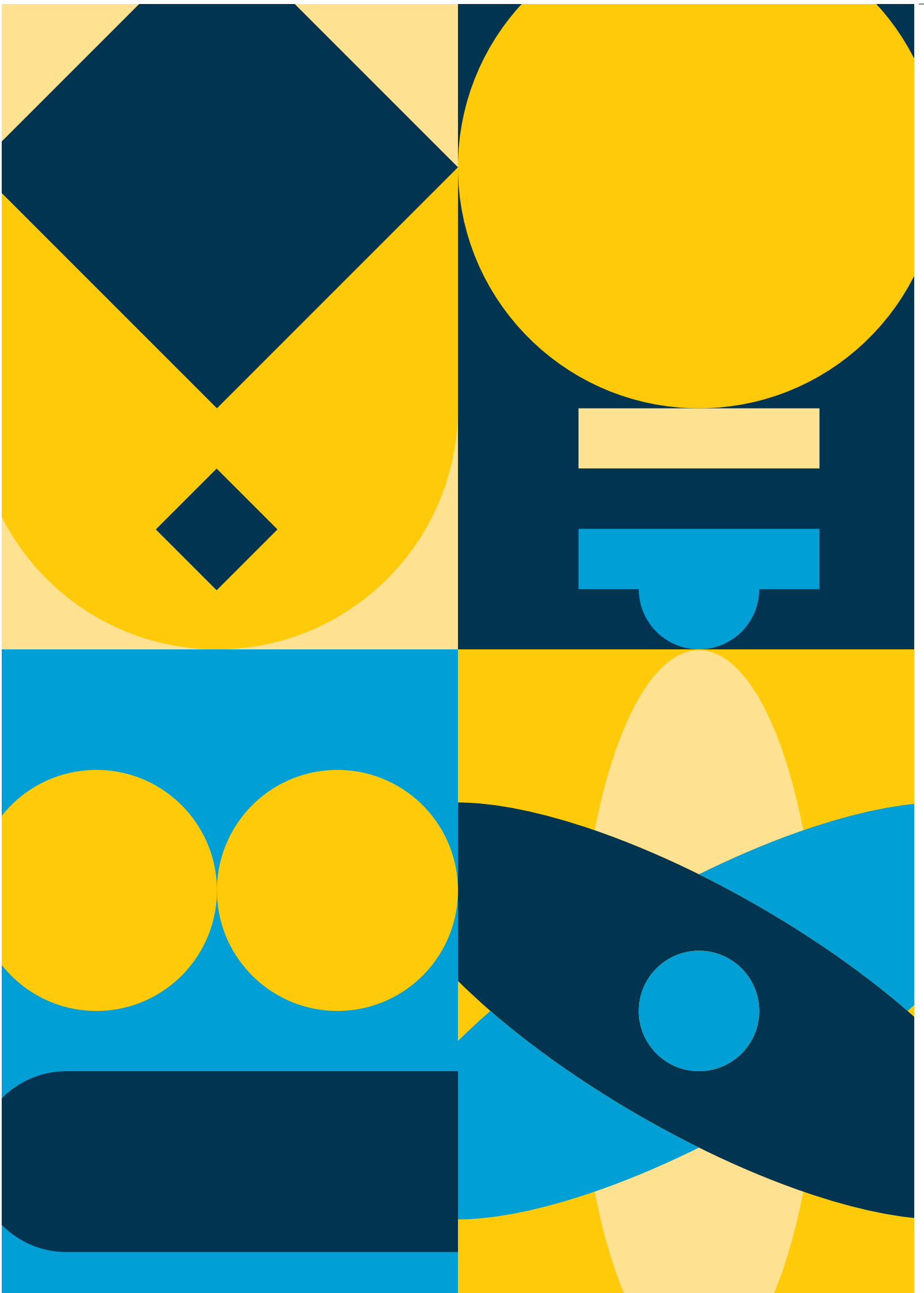


Early University Entrance at Dublin City University

For Transition Year Students with High Academic Ability

Semester 1 | 2024 - 2025





Invitation to Participate in the EUE 2024-2025 Programme

Dear Parent and Student,

The Centre for Talented Youth, Ireland is pleased to continue the Early University Entrance Programme at Dublin City University for Transition Year students of the 2024-25 academic year.

This is an exciting opportunity! Early University Entrance gives students with high academic ability the opportunity to enrol as part-time students on one of several courses based on degree programmes at DCU. Taking a portion of the first year modules, Early Entrants attend DCU Glasnevin Campus for one day each week, over 13 weeks, to study degree level material alongside similarly aged students. The 10 courses are: Biology, Business Studies, Computer Science, Engineering, International Relations, Japanese, Law, Philosophy, Physics and Psychology.

The Early University Entrance programme has been running for several years and its evaluation composed my PhD thesis. The young students were found to have performed as well (and at times better) than the regular cohort of first year students taking the same modules. They suffered no ill-effects socially as there was a large group of similarly aged students. They learned much in terms of their chosen

field of study, but also in terms of independent learning, self-organisation, the demands of learning at university level, high level writing skills and group work. You will read further in the brochure feedback from some of the original Early Entrance students.

This brochure outlines the Programme and the courses available in detail. I would encourage any student who is bright, motivated and committed to learning to apply, as it will give you a unique opportunity to sample university life, but more importantly allow you to experience a level of learning and challenge that is more suited to your academic needs. Though the programme is relatively new to Ireland, it is not a new concept. There is much evidence of the success of acceleration programmes in other countries, and therefore much by way of best practice.



Dr Catriona Ledwith
Early University Entrance
Programme Organiser

Programme Background

What is Early University Entrance?

Early University Entrance is an acceleration programme for Transition Year students with high academic ability. Participants may follow modules from degree programmes available at Dublin City University, Glasnevin part-time, throughout their transition year.

Students choose one course (see later in this brochure), and study 1-2 modules associated with that subject on one full day each week in DCU. Subjects may be scheduled any day from Monday to Friday. Classes take place between 10am and 4pm each day, in separate classes of approximately 20 students. Thus the Early Entrance classes will be made up of just Early Entrance students and run in parallel with the normal lectures in DCU. Students will also be expected to dedicate time outside of the scheduled lectures to independent learning, course assignments, etc.

Students may choose to partake in assessments and sit exams in their chosen modules at the end of the semester. (Students should note that this programme will not help them to obtain a place at DCU when they are awarded their Leaving Certificate. They must still apply through the CAO).

The Reasons for Early University Entrance Academically talented students are typically highly motivated, but too often complain of being unchallenged and under-stimulated at school. This Programme will give these students the opportunity to access a level of learning that more appropriately matches their academic needs. They will learn high level material at a relatively fast pace, thereby providing a more realistic level of challenge.

How will Early Entrants benefit from the Programme?

The advantages of taking on a degree programme at an earlier than typical age are wide-ranging. Research has shown that second level students who participate in university programmes benefit from:

- the experience of an intellectual peer group
- an optimally matched level of learning
- the experience of more appropriate and realistic academic expectations
- the opportunity to reach one's potential
- the focus it lends toward future study
- formal recognition of their ability
- it provides access to specialist teachers
- it can enhance student motivation through specialisation
- it affords the opportunity to study challenging and interesting course material
- it helps the student to become more independent
- it gives them the experience of university life
- they will have direct access to cutting edge research
- it helps the student gain better perspective on their own education and their academic goals

Early Entrants will have the benefit of being part of an enhanced intellectual group over a sustained period. Students on similarly styled programmes have proven time and time again that their age is not a hindrance to academic success. Research on this programme and others have shown that Early Entrants perform as well, and in fact usually better, than regular first year students in end-of-term exams.

Knowledge Gaps

We are mindful that students taking on degree level coursework are likely to encounter material that requires the foundation given by the Leaving Certificate curriculum. Great care is taken therefore in adapting the modules so that students may learn all that is necessary to bridge any knowledge gaps.

The Development of Early University Entrance

The Programme was developed by Dr Catriona Ledwith, at the Centre for Talented Youth, Ireland. The Programme development and evaluation was central to her PhD research at the School of Education Studies, DCU, under the supervision of Prof Joe O'Hara. It was a unique experience for the students and a pioneering endeavour for DCU. The Programme was developed as a

CTYI/DCU initiative, and had the approval of CTYI's Academic Advisory Board and the Research Ethics Committee, DCU.

The programme was found to have hugely positive academic and personal outcomes for its participants. Based on this research, it is hoped that Early University Entrance will form a new direction for second level students at CTYI.

The Early University Entrance Programme has received the full support of the Centre for Talented Youth, Ireland, and Dublin City University itself. Individual Faculties and Schools have given generously of their time, advice and resources. (The original Programme received the support of the then National Coordinator for Transition Year, Mr Michael O'Leary.)





Pastoral Care

Certainly in Irish terms, this is new territory and though embarking on new terrain particularly in education, is exciting, there will be concerns for everyone involved; student, parent, teachers, researcher and the university community. Much consideration and deliberation preceded the setting up of this Programme. It has been developed in line with the procedures and guidelines of the Irish Centre for Talented Youth, a long established unit at DCU, with strict rules and guiding principles on working with children and young people. It has adhered to the best practices in concurrent enrolment and early college entrance, as given by the universities and third level institutions in the US where similar programmes exist. The Programme will also operate in a manner that ensures effective child protection. The Early University Entrance Programme will have a strong support network in place, given that the students will be younger than the ordinary student population on campus. The Programme will operate under the guiding principles of the Centre for Talented Youth Ireland, which has a long history of working with children and young people. Though not as intensive in a supervisory capacity as the CTYI Summer Programme, the students will be monitored closely from a variety of different perspectives. They will have frequent contact with staff throughout.

Accessible to Students across the Country

The 10am start at Early University Entrance is primarily to facilitate the commute to the DCU campus. Each year we have students coming from counties as far away as Cork and Donegal, taking very early trains to get here. Starting at 10am means EUE is a workable option. Having to attend over a number of days each week might make it prohibitive but one day makes it a little more accessible from most locations around the country. Finishing at 4pm also means that students can get home at a reasonable hour!

Course Information

The modules listed below indicate what is involved in each course; however, the precise content will be finalised at a later time. Specific details on each degree programme are given over the following pages. The general information is taken from the DCU Prospectus. Please note that, though unlikely, the modules listed below may change. (From time to time, Schools reorganise the arrangement of modules). Where possible there will be double classes offered for certain subjects. This will be based on the discretion of the programme organisers, the availability of staff and the facilities needed to maintain the high standards of the Early Entrance programme.

Eligibility

The Early University Entrance Programme is happy to receive applications from any student who:

is in Transition Year during the 2024-2025 academic year

AND

has previously qualified for the CTYI or CAT Programmes through CTYI Talent Search or based on a Psychological Assessment

OR

may not have the formal assessment results documented above but who has demonstrated high ability. These students will be accepted at the programme organisers' discretion.

Course Options Semester 1

There are a limited number of places on each of the following courses:

Early Entrance Biology - based on modules from the Common Entry into Science
- How Life Works 1 (BE101)

Early Entrance Business - based on modules from the BA in Business Studies
- Management Accounting for Decision Making (AC115)
- Introduction to Microeconomics (EF113)

Early Entrance Computer Science - based on modules from BSc in Computer Science
- Introduction to Computer Hardware (CA112)
- Introduction to Computer Systems (CA103)

Early Entrance Engineering - based on modules from Common Entry into Engineering
- Introduction to Electronics (EM113)
- Materials Engineering (EM115)

Early Entrance International Relations - based on modules from BA in International Relations
- Introduction to International Relations & Security (LG117)
- Introduction to Global Governance (LG132)

Early Entrance Japanese - based on modules from BA in Applied Language and Translation Studies
- Japanese Language 1 (JA193)

Early Entrance Law - based on modules from BCL in Law and Society
- Irish Legal System (LG131)
- Tort Law (LG216)

Early Entrance Philosophy - based on modules from Bachelors of Arts (Joint Honours)
- Introduction to Philosophy (TP132)
- Environmental Philosophy (TP233)

Early Entrance Physics - based on modules from BSc in Applied Physics
- Light and Optics (PS102)
- Motion and Energy (PS101)

Early Entrance Psychology - based on modules from BSc in Psychology
- Child Development (PSYC106)
- Cognition (PSYC103)

The course modules will, where possible, relate to existing first year modules on the named degree programmes. In some instances, the course modules on Early Entrance will follow the module precisely, while in others excerpts will be selected so that knowledge gaps are minimised. Each cooperating School and their nominated course instructor have worked with Dr Ledwith on exact course content.

EUE Biology

Understanding Biology

Biology makes up an integral part of degrees in Biotechnology, Genetics and Cell Biology, but it is also an important aspect in almost all other science degrees in DCU, such as the BSc in Science Education, or the BSc in Chemical and Pharmaceutical Science, etc.

Biology plays an important role in understanding complex forms of life. What are the differences between humans and plants, and what have we in common? Knowledge of biology allows us to create solutions to the challenges many living organisms face, and it paves the way for discoveries and inventions that can improve our quality of life. Through studying biology, we can develop a greater understanding of the human body and how to effectively deal with diseases. By studying the components of living cells, we can learn how to control, fix and modify them to our benefit.

This course will introduce students to the concept of the cell and focus on the basic biochemistry, physiology and molecular detail of animals and plants, including an introduction to animal evolution and diversity.

Will it suit me?

The course in Biology will be of interest to students who enjoy studying biology and for those with an interest in recent scientific breakthroughs in human disease, molecular biology and research at the cellular level.

What Will I Study?

SEMESTER 1

How Life Works 1 (BE101)

Please note that although the modules for this course will follow the techniques practised at DCU undergraduate level, the course material will be catered specifically to the Early Entrance students.

Full details of these modules are available at: dcu.ie/registry/module_contents.php.

A Future Career

Understanding how cells work underpins many areas, and so there is huge demand for a workforce with scientific knowledge, particularly in molecular and cellular biology. Graduates of biology degrees go on to work in biomedical research, biophysics, cell biology, bioengineering, microbiology, physiology, and more.



EUE Business Studies

Understanding Business Studies

The Bachelor of Business Studies degree is a first-class all-round business degree with exciting options in HR management, marketing, economics, eBusiness management, and finance. It is the essential toolkit for the world of business.

Today's business world is rapidly evolving, and the key to success in this world is creativity and innovation. Just look at how the internet has changed the way we communicate, buy products and inform ourselves. These values are at the core of our Business Studies course - a course that is constantly innovating to reflect both best practice in business education and relevance to management and business practice in the real world. Since the early 1980s the Bachelor of Business Studies (BBS) has introduced many innovations to undergraduate education. Through elements such as business simulations and new enterprise development projects, we set out to stimulate and foster imaginative thinking among our graduates, giving you the skills to arrive at solutions to business problems.

Will it suit me?

Do you find the world of business an interesting place? Do you see yourself enjoying a career in one of the many areas of business that could take you from management and finance to marketing and HR?

Instructor's Comments

"While a majority of students that undertake the Business course have a good appreciation of the subject and general topics from an academic perspective, it can often be the non-academic things that greatly assist students in achieving high grades (i.e. > 65% in end of term exams). Some of the things that I have noticed is that students that form friendships within the class group often develop greater interaction, both socially and academically, and are more likely to question and challenge conventional thinking and traditional theory of the subject matter. In particular, participation in study groups with each other can greatly assist students experience the potential eclectic mix of personalities and knowledge levels that will most likely exist in third level and within future work environments. To be able to experience and demonstrate an ability to work with people in groups comprising of different skill sets within a team can greatly enhance one's own experience, knowledge and understanding of the subject. Sometimes we can learn more about a subject topic in a more efficient manner from social and topical interaction with fellow class attendees."

Patrick D'Arcy

What will I study?

SEMESTER 1

Management Accounting for Decision Making AC115

Introduction to Microeconomics EF113

Please note that although the modules for this course will follow the techniques practised at DCU undergraduate level, the course material will be catered specifically to the Early Entrance students.

Full details of these modules are available at: dcu.ie/registry/module_contents.php.

A Future Career

You will be ready to make a genuine and lasting contribution to any workforce. Indeed, graduates from the BBS have an international reputation for making an immediate and significant contribution whatever path they choose. And you will follow in their footsteps. As shown in surveys of university graduates, graduates of the BBS are now the most sought after business graduates in Ireland. Business Studies is a smart choice for anyone who wants to pursue an industrial, commercial or public career, or start their own business.

EUE Computer Science

Understanding Computer Science

Computing technology is all around us in our everyday lives. As intelligent, innovative and forward-thinking people continue to develop technology, it can help us to solve problems in a great range of applications (e.g. traffic circulation, climate modeling, the study of diseases, systems engineering, business modeling and ecology). This degree prepares you for a career in computing and information technology. It gives you in-depth knowledge of software engineering and the practical skills to apply this knowledge to develop the technology behind computer games, mobile phones, the Internet, web applications, entertainment systems and many other computing-based products.

Will it suit me?

Do you enjoy problem solving? Do you like creating things? This course will help arm you with the tools needed to impact and shape our world with technology. This course will suit anyone who is technically minded and enjoys problem solving.

What will I study?

SEMESTER 1

Intro to Computer Hardware CA112

Intro to Computer Systems CA103

Please note that although the modules for this course will follow the techniques practised at DCU undergraduate level, the course material will be catered specifically to the Early Entrance students.

Full details of these modules are available at: dcu.ie/registry/module_contents.php.

A Future Career

There is a broad range of careers that lead on from a degree in Computer Science. Students who continue to study CS at degree level become software engineers, programmers, systems analysts, web developers, cloud computing developers, app developers, technical consultants and computer studies teachers.

Instructor's Comments

"This course is an excellent and exciting introduction to the world of Computer Science, touching on both the practical skills needed to become a software engineer and the theory required to understand how our day to day technologies work. Using Python as an introductory language, students will learn fundamental programming concepts and principles, allowing them to write their own programs and build their own projects. The work covered in this course would give any student a significant advantage entering any computer science degree, teaching concepts vital to any aspiring software engineer, systems analyst or web developer. This course encourages students to develop their critical thinking and problem solving abilities, as well as their social and communication skills in collaborative group projects. I would recommend this course to anyone who has an interest in technology, and a passion for learning about how systems and technologies work."

Seán Hammond

EUE Engineering

Understanding Engineering

Of all the courses and careers you can pursue, engineering is one of the most exciting. Engineers invent and design things, they make things work and they analyse and solve problems in all sorts of fields. For example, one of the areas emerging at the moment is the application of electronic and mechanical engineering to biology and life sciences.

Engineering solutions help patients with better diagnostic imaging, improved hearing devices, better blood vessel implants, laser surgery, etc. Engineers have designed the latest MP3 players, digital televisions, laptops and mobile phones. Engineers' work is behind industrial robots and racing cars, 3D cinema and airplanes, the latest computer games and the international space station. As engineers, you can find yourselves at the heart of just about any field, from high-tech industry and medicine to financial services, energy-aware technologies and biotechnology - the cutting-edge dynamic industries of tomorrow.

Common Entry into Engineering is specially designed to help you to find the course most suitable for you while studying the fundamentals of engineering. After the first year (common to all six engineering degrees in DCU), students may apply to follow a specific programme. Early Entrance Engineering is based on modules from this general programme, to give students a flavour of as many of the specialized areas within engineering as possible.

Instructor's Comments

"This is a broad and interesting introduction to materials science, covering the science of why materials have the properties they do, and leading to the use of materials in design. Looking at the minute level up to the very large, this all-encompassing course suits those with an interest in science and engineering. The class investigates practical examples, thinking about why things are made from what they are made from. This might be something students had never considered before. The theory in the course is backed up by practical example which aids understanding and learning. Students work independently and in groups. Questions are invited and encouraged during the lectures. Group work during tutorials helps the students to get to know others in class and to see different points of view and different answers to the same question. By the end of the course, students should have a good overview of the various engineering materials available and a good idea as to why a particular material choice is made for a particular design."

Will it suit me?

As for most engineering degrees, ability in mathematics is a key requirement. A logical mind and an eye for detail are also important. Previous experience of maths, engineering or theoretical physics at CTYI will be an advantage, but is not essential, as the fundamentals will be covered on each module.

What Will I Study?

SEMESTER 1

Intro to Electronics EM113

Materials Engineering EM115

Please note that although the modules for this course will follow the techniques practised at DCU undergraduate level, the course material will be catered specifically to the Early Entrance students.

Full details of these modules are available at: dcu.ie/registry/module_contents.php.

A Future Career

Engineering is about the design and production of useful products and services. It translates scientific knowledge into technology, and technology into successful innovation. Engineering subdivides into a broad number of specializations; mechatronic, electronic, digital media, mechanical and manufacturing, biomedical, and informational and communications engineering degrees, all of which are available to study in DCU. Engineering is a smart choice for anyone who is interested in design, technology, and development.

Dr Niamh Plunkett

EUE International Relations

Understanding International Relations

The International Relations degree will give you insight into the major world issues that challenge and fascinate us today. You'll examine the forces that shape contemporary societies, such as globalisation, international law, third-world debt and American foreign policy. You'll also study key institutions like the European Union and the United Nations. You'll learn from staff with expertise in areas such as Terrorism and Counter-terrorism, European Union studies, Middle-Eastern studies, International Security and Conflict Studies, International Law and Aid, and Development Studies.

The programme also prepares you for the work force by imparting broader abilities, such as oral and written communication skills, the capacity to think analytically, teamwork skills, and research techniques.

Will it suit me?

International Relations is a diverse field that is extremely relevant in the increasingly globalised world we live in. Graduates from our BA in International Relations will be ideally suited to a number of roles especially when combined with work experience abroad and foreign language skills. With deep insight into global politics, cultures and the ability to identify and analyse global issues, graduates of International Relations are well placed to pursue careers with governmental and non-governmental organisations, both national and international, like the United Nations and European Union, diplomatic services, as well as with major international corporations.

Instructor's Comments

"Why do states go to war? How can we explain conflicts, crises, and cooperation, and what role is there for the key institutions of global governance? In International Relations and Global Governance, students will explore a variety of theories to describe, explain, and critique the behaviour of states and non-state actors. They will also examine the roles and responsibilities of key institutions in global governance, like the UN Security Council and General Assembly, and consider the future of their reform. Drawing on students' knowledge of (and curiosity about) contemporary events, this interactive course is an opportunity to engage in organised debates and produce critical written reflections on war and security, the environment, human rights, gender, and public health -- some of the most pressing issues on today's global governance agenda. "

Sharon Galantino

What will I study?

SEMESTER 1

Intro to International Relations and Security LG117

Intro to Global Governance LG132

Please note that although the modules for this course will follow the techniques practised at DCU undergraduate level, the course material will be catered specifically to the Early Entrance students.

Full details of these modules are available at: dcu.ie/registry/module_contents.php.

A Future Career

Students who study International Relations go on to work in fields such as the international civil service, diplomatic services, international aid, policy evaluation and research, international commerce, journalism, politics, the armed forces, public affairs and public policy education.

EUE Japanese

Understanding Japanese

Japanese is a beautiful and fascinating language spoken by over 130 million people worldwide. You might have been introduced to the language through manga and anime or be a complete beginner, but as you learn the language you'll grow to appreciate both the traditional and modern culture of Japan, and understand how deeply the language is woven into Japan's culture.

The Early Entrance Japanese course aims to introduce students to some of the essential aspects of Japanese culture, society and language. Students will be familiarised with a range of everyday situations requiring the use of specified linguistic skills, and will begin to build written and verbal competence in the language. Students will be guided in the development of a range of language learning strategies and transferable skills, such as independent learning.

Will it suit me?

Japanese is a challenging language that requires learning multiple new alphabets and a whole new grammatical system, but will open up a whole new culture to you while boosting your memory skills and self-confidence. If you have learned a new language in school and enjoyed it, consider trying Japanese too! You should have a curious mind and not be afraid to make mistakes – it's all part of learning a new language. You don't need any previous knowledge of Japanese, as we'll be starting with the basics.

Instructor's Comments

"Japanese Language is a basic introduction to the language and writing systems of Japan, but over the course of the semester you will learn a large portion of what is covered in the Leaving Certificate Japanese syllabus – it's a good challenge for anyone who loves languages! As well as the Japanese language, during the Early University Entrance Japanese course you will also learn about many of the fascinating aspects of Japanese culture, including food, entertainment, infrastructure, sport and history. This interactive course includes plenty of in-class discussions and activities with the aim of getting students to really engage with the language and culture of Japan."

Hazel Skinner

What Will I Study?

SEMESTER 1

Japanese Language 1 (JA193)

Please note that although the modules for this course will follow the techniques practised at DCU undergraduate level, the course material will be catered specifically to the Early Entrance students.

Full details of these modules are available at: dcu.ie/registry/module_contents.php.

A Future Career

We live in a multicultural society and studying languages opens doors to other countries, cultures, people and employment opportunities. Good communication through foreign languages is a huge advantage when applying for jobs in a range of industries, including translation, interpreting, gaming, banking, tourism, education, research, global organisations and recruitment.

EUE Law

Understanding Law

EUE Law is based on modules from the BCL (Law & Society) from the School of Law & Government. As a full degree, it provides students the foundations needed to pursue a career as a solicitor or barrister. During your degree students study core modules that prepare for the entrance exams to the Law Society as a trainee solicitor or to help students qualify for entrance to the Barrister-at-law degree at King's Inns.

Will it suit me?

Law students should be prepared to put in long hours, while studying law. This immensely satisfying and though-provoking course will suit students who enjoy picking apart a situation or circumstance, and building a supporting case. Throughout your learning we teach you to question how law affects society so that you gain a critical perspective at all stages of this degree. Students will begin to learn transferable skills, including research techniques, and oral and written communication.

What will I study?

SEMESTER 1

Irish Legal System LG131

Tort Law LG216

Please note that although the modules for this course will follow the techniques practised at DCU undergraduate level, the course material will be catered specifically to the Early Entrance students. Full details of these modules are available at: dcu.ie/registry/module_contents.php.

A Future Career

This course is suitable for any student who is considering a career as a solicitor, barrister, paralegal, legal Advisor, politician, civil servant, auditor, risk analyst, policy manager, researcher or regulator.

Instructor's Comments

"The Irish Legal System module offers students an insight into the foundations of our legal system, focusing on the work of legal professionals, the court structure, the judiciary, the concept of rehabilitation vs punishment, the special protections afforded to children in the justice system, the mechanics of how a trial operates, sentencing options for an accused, and much more. This interactive course includes plenty of in-class discussions and activities with the aim of getting students to really engage with the law, develop their own opinion, and become passionate about law in Ireland. There are many hypothetical scenarios given throughout the course culminating in a mock trial at the end, giving students the opportunity to act as solicitors and barristers and put their legal knowledge into action!"

Shannon Colmey

EUE Philosophy

Understanding Philosophy

Philosophy is possibly the most fundamental of subjects as it asks the question: 'What does it mean to be?' The aim of this course is to enable students to acquire the basic skills of philosophy i.e. analytic argument and essay writing; and to introduce students to some of the most profound thinkers in history. The course will cover some of the fundamental concerns of philosophy such as: the history of philosophy, metaphysics and epistemology, logic, ethics and political theory, the philosophy of mind.

Will it suit me?

Philosophy has something for everybody, but particularly suits those who are curious about all aspects of life and want to use reason to answer life's biggest questions. If you are interested in the nature of reality, the concept of truth or how to live a good life, philosophy is the course for you. If you enjoy expanding your mental horizons, learning how to construct an argument and find weaknesses in other arguments, and analysing contemporary issues using logic, philosophy is for you. Everybody asks philosophical questions at some point in their lives; and such questions are especially pertinent during the teen years.

What Will I Study?

SEMESTER 1

Intro to Philosophy TP132

Environmental Philosophy TP233

Please note that although the modules for this course will follow the techniques practised at DCU undergraduate level, the course material will be catered specifically to the Early Entrance students. Full details of these modules are available at: dcu.ie/registry/module_contents.php.

A Future Career

Philosophy does not create an obvious career path outside of academia. However, the skills philosophy graduates develop widely sought after in a variety of fields. It turns out that over the long term, philosophy graduates earn the most of any liberal arts graduate. The problem solving abilities and creative approaches of philosophy graduates are increasingly valued, notable amongst big-tech companies.

Instructor's Comments

"The EUE Philosophy course is a program designed to inspire and engage young students with ideas in the history of philosophy as well as with contemporary philosophical concerns and debates. It consists of two modules. In the Introduction to Philosophy module, the students will learn to identify key innovations in the evolution of philosophy from the pre-Socratic to the Modern period. In the Environmental Philosophy module, students explore several environmental and ecological controversies that raise fundamental questions about what we, as human beings, value, about the kind of beings we are, the kinds of lives we should live, our place in nature, and the kind of world in which we might flourish. By the end of this course, the students will be able to grasp philosophical concepts, learn how to formulate strong arguments, identify mistakes in the arguments of others and engage with several philosophical problems in a highly interactive, fun, and stimulating teaching and learning environment."

Evie Filea

EUE Physics

Understanding Physics

Physics is the most fundamental science. It explains the mysteries of the universe and has fuelled many of the scientific and technological developments that we take for granted. Physicists also pioneered modern technologies as diverse as the Internet, nuclear power and MRI scanners. Today physicists continue to generate new knowledge about our world and lead innovation in yet-to-be exploited realms such as quantum information and communications technology, nano-systems design, ultrafast molecular switching and terahertz medical imaging.

Will it suit me?

If you are interested in how the world works and how science seeks to answer the big questions, if you have a logical mind and competency in mathematics then Physics may be the course for you.

What will I study?

SEMESTER 1

Light and Optics PS102

Motion and Energy PS101

Please note that although the modules for this course will follow the techniques practised at DCU undergraduate level, the course material will be catered specifically to the Early Entrance students. Full details of these modules are available at: dcu.ie/registry/module_contents.php.

A Future Career

Physics provides you with the platform to progress to a degree in your chosen area of specialism, with potential to pursue careers in areas as varied as: Meteorology, Astronomy and Astrophysics, Design Management, Data Science, Research and Development, Education, Information Technology, Healthcare and Aeronautics. You will also be ideally positioned to pursue further study.

Instructor's Comments

"The study of light and optics is a hugely important side of physics, and in this module, students are introduced to electromagnetic waves, the nature of light and how it propagates, geometric optics, diffraction and interference. The area of sound is also introduced and the differences and similarities between light and sound examined. Knowledge of the properties of light and optics is vital in understanding wide ranges of modern applications and technologies. Teamwork is an aspect of the course that is promoted during tutorial time, when the students work together in groups. This is a wide ranging course that introduces interesting and vital aspects of physics that explain a huge amount about the world around us."

Dr Niamh Plunkett

EUE Psychology

Understanding Psychology

Psychology is concerned with all aspects of behaviour and the thoughts, feelings and motivations underlying such behaviour. While psychologists differ in their interests within the field of psychology and in the type of work they do, they all approach the study of psychology in a scientific way. Psychologists are concerned with practical problems such as:

- How can we make sure that eyewitness accounts in court are reliable?
- How can we help people overcome depression, stress or phobias?
- How do footballers keep their anger in check on the pitch?
- What makes a good manager?
- How can teachers ensure students are really learning?

If you think these research questions are interesting, then you may be interested in studying psychology.

Will it suit me?

You should possess good verbal and written skills, be hard-working and creative, have an enquiring mind and have the ability to think critically. Other qualities that would be an advantage are flexibility and good interpersonal skills.

Instructor's Comments

"The EUE Psychology module is a thought-provoking and engaging course that gives students insight into the processes of human cognition and development. The course highlights to students the interaction between our biological and genetic disposition and the social influences that shape how we think, feel and behave. The course covers topics such as Cognitive Psychology and Child Development, which gives students a broad understanding of the complexities and nuances of human behaviour. The course teaches students how to engage critically with the material presented in class, and how to develop their own educated, well informed opinion that is backed by empirical research. The course also gives students some insight into the scientific process of conducting research within psychology, and an awareness of the ethical issues that have been dealt with within psychological research over the past number of decades."

Shauna Glennon

What Will I Study?

SEMESTER 1

Child Development PSYC106

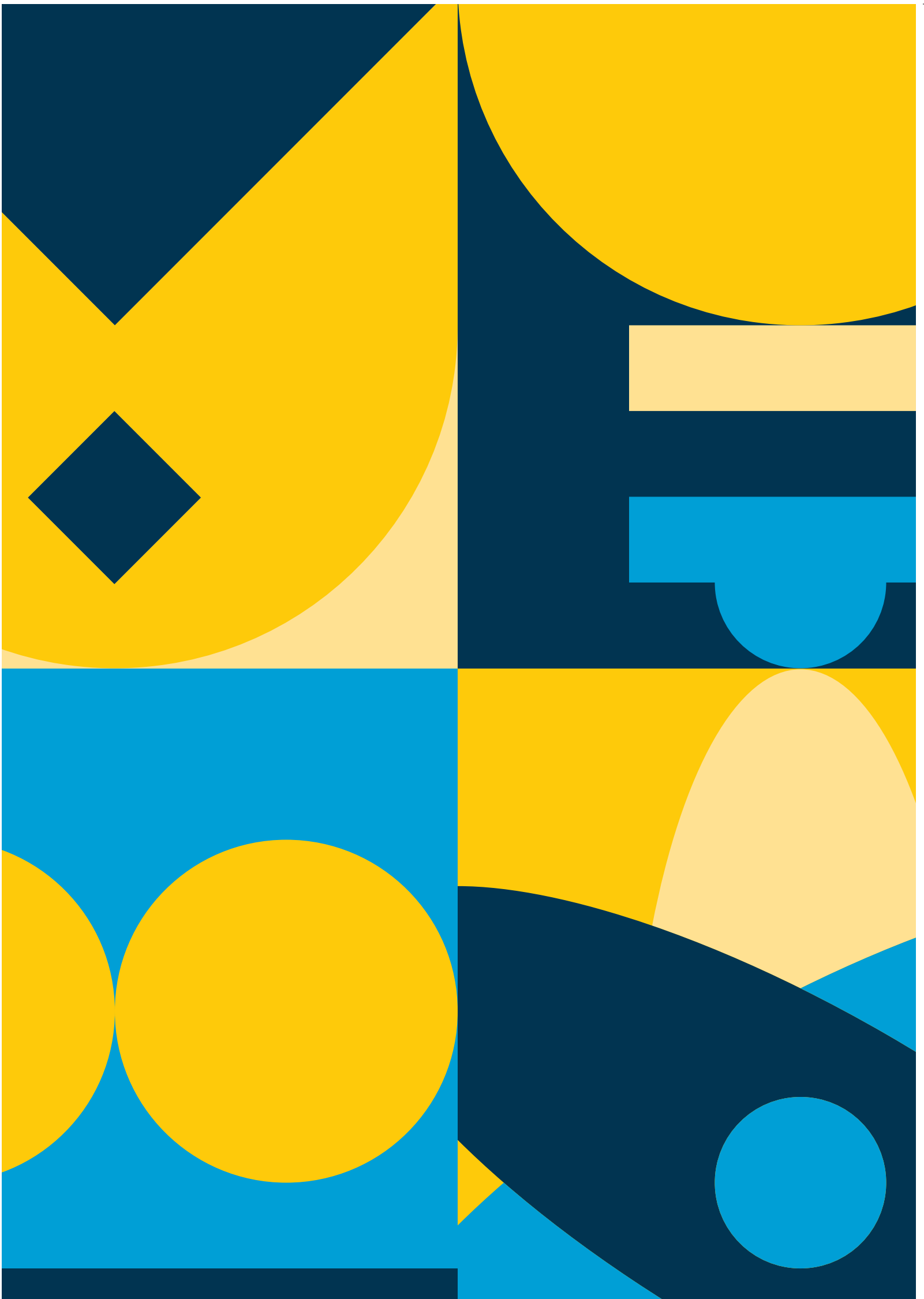
Cognition PSYC103

Please note that although the modules for this course will follow the techniques practised at DCU undergraduate level, the course material will be catered specifically to the Early Entrance students.

Full details of these modules are available at: dcu.ie/registry/module_contents.php.

A Future Career

For those wishing to work as a psychologist in a professional setting, e.g. counselling, clinical, organisational, health, educational, sport or academic, further study is required. A degree in psychology opens up a number of different career paths. Many psychology graduates have used their degree to pursue a career in management, social research, youth work, community development, public relations, human resources and marketing.



Fees

The fees for the Early University Entrance Programme semester 1 are **€900** in total.

Semester fees are paid in two portions:

- A €200 registration fee is required **with your application**. (This is refundable if you don't get offered a place)

- The remaining €700 fee should be paid on or before **Friday, 2nd August 2024**.

Payment can be made by bank draft, postal order, or credit/debit card. Cheques and cash are not accepted.

To pay by card, pay through the CTYI Online Payment Portal, via the link below: www.dcu.ie/ctyi/application-payment

DEIS Schools linked to DCU

Only students from the schools listed below qualify for reduced EUE fees. Please note this reduced fee only applies to EUE courses.

Beneavin De La Salle College,
Beneavin Road, Finglas, Dublin 17

Chanel College,
Coolock, Dublin 5

Coláiste Dhúlaigh,
Barryscourt Road, Coolock, Dublin 7

Coláiste Eoin,
Cappagh Road, Dublin 11

Cabra Community College,
Kilkiernan Road, Cabra, Dublin 9

Grange Community College,
Grange Road, Donaghmede, Dublin 13

Margaret Aylward Community College,
The Thatch Road, Whitehall, Dublin 9

Students from DEIS schools linked to DCU should contact us directly, as they are eligible for greatly reduced fees.

Scholarships and Financial Assistance

CTYI offers one full or multiple partial scholarships to students applying for any of the ten courses being offered on EUE. Please note that CTYI scholarships are awarded on the basis of merit and need.

Eversheds Sutherland LLP are offering one full scholarship to students applying for the Law course. Please find the scholarship application forms in the application booklet.

Financial aid is also available. Please contact us if you require a form for this, as it should accompany your application.

New Cross College,
Cappagh Road, Dublin 11, Dublin 5

Mercy College,
St Brendan's Drive, Malahide Road, Dublin 9

Our Lady of Mercy College,
Beaumont Rd, Beaumont, Dublin 9

Pobalscoil Neasáin,
School Ln, Baldoye, Dublin 13

Rosmini Community School,
9 Gracepark Road, Drumcondra, Dublin 9

Scoil Chaitríona,
St Mobhí Rd, Glasnevin, Dublin 9

St Aidan's CBS,
Collins Avenue, Whitehall, Dublin 11

St David's CBS,
Malahide Road, Artane, Dublin 5

St Mary's Holy Faith,
Old Finglas Road, Glasnevin, Dublin 11

St Mary's Holy Faith,
Brookwood Meadow, Killester, Dublin 7

St Vincent's CBS,
Finglas Road, Glasnevin, Dublin 11

St Finian's Secondary School,
Castlefarm, Swords, Dublin 11

St Kevin's College,
Ballygall Rd East, Finglas, Dublin 11

St Michael's Holy Faith,
Wellmount Road, Finglas, Dublin 9

The Donahies Community School,
Streamville Road, Dublin 13

Trinity Comprehensive,
Main Street, Ballymun Road, Dublin 9



Law Scholarship

EVERSHEDS SUTHERLAND

Helping you to unlock your ambitions

Eversheds Sutherland is Ireland's largest and most established global law firm with an all-island offering. It provides a full range of legal services and advice to a global client base that includes some of Ireland's largest, most successful, and most progressive companies, as well as many exciting and innovative smaller companies. The firm has more than 70 offices in over 30 countries.

Eversheds Sutherland's partners and solicitors work in partnership with clients to deliver leading legal advice on time and within budget through the firm's innovative project management structure, which is unique among the legal profession. What is of great importance to the firm is making sure that every client receives personal attention, dedicated service, and the most appropriate integrated advice.

Being part of a global network means its Irish teams provide a seamless service right across Europe, the US, Asia, Africa, and the Middle East. At a local or international level, the firm aims to help all its clients achieve their commercial objectives and unlock their global ambitions.

Eversheds Sutherland is offering one full scholarship to a student taking part in the Law course on EUE. If you are applying for the Law course, please feel free to apply for this scholarship!

Arizona Exchange Programme



Continuing the partnership between Dublin City University and Arizona State University, the Early University Entrance programme at CTYI has linked up with the Gary K. Herberger Academy in Arizona State University.

The Gary K. Herberger Young Scholars Academy (HYSA) is a full time high school dedicated to exceptionally able students. It's a bit like a year-round CTYI! The mission of the Academy is to provide gifted young people with advanced education opportunities and develop programmes that serve these students, encouraging them to become globally minded citizens.

We are offering a small group of incoming Early University Entrance students the opportunity to take part in an exchange to the Herberger Academy in Arizona. In January 2025, the selected Irish students will travel to Phoenix, Arizona to stay with host families whose children attend the Academy, they will stay for 3 weeks. Students will have the opportunity to take part in classes with the Academy's full time high school students, attend lectures within the University and experience the Academy's extra-curricular activities. Students' exchange buddies from HYSA will travel to Ireland to participate in session 2 of the CTYI summer programme, staying on campus as residential students. We will arrange for them to meet with their exchange students during this time.

Students interested in taking part in the exchange should complete the application form enclosed. Participants are selected on a lottery system and we expect there to be approximately 8 - 10 places on offer. Please note the following conditions:

- The student attending MUST commit to two semesters of Early University Entrance and pay the full fees (€1800) before 25th October 2024.
- CTYI will cover the cost of flights and the students will be accompanied by a member of CTYI staff flying over, and flying back. Irish students MUST be available to travel together with the group travelling to Phoenix, and returning to Dublin. Accommodations cannot be made for students who are not available to travel with the group, for any reason.
- Students will be required to pay their host family \$150 per week (\$450 total) to cover their accommodation and board.
- Students will be assigned to their host family in collaboration with Michael Twilling, Executive Director of the Herberger Academy. Students will be assigned with students the same age and gender.
- Applications are open now and students will be chosen in our lottery in late September 2024.

Please Note

Students must have a valid Irish passport, and must be free to travel to the United States under the Visa Waiver scheme. Students must never have been refused entry to the United States of America. Students will be required to arrange travel and medical insurance before departure. Any pre-existing medical conditions must be disclosed to CTYI.

Further details and terms will be communicated to applicants in due course.

Timetable Information

Each semester runs over 13 weeks. Students will be expected to attend lectures during school holidays if lectures are scheduled.

Semester 2	Begins week starting Monday, 2nd September 2024	Concludes week ending Friday, 6th December 2024	Exams 2nd - 6th December
------------	---	---	------------------------------------

No classes from Monday October 28th to Friday November 1st 2024.

Class will take place between 10am and 4pm, with an hour for lunch and a short break mid-morning and mid-afternoon. Exact times will be defined later, to suit lab sessions etc. Provisionally, we have the following set in place. Please note that days may change. Previously, classes have had to be offered on alternative days due to the large numbers of students and limited availability of classrooms, but we will do our best to offer the classes on the days listed below.

Days liable to change

Day	Course	10am -12pm	12pm -1pm	1pm - 2pm	2pm - 4pm
Monday	Business	Module 1	Lunch	Tutorial	Module 2
	Int. Relations				
Tuesday	Engineering				
	Japanese				
Wednesday	Biology				
	Computer Sci.				
Thursday	Psychology				
	Physics				
Friday	Law				
	Philosophy				

Orientation

The orientation for new students will take place online, usually the week before classes are due to begin.

Exams, Credits and Exemptions

Students are strongly encouraged to undertake all assessments associated with their modules. This includes continuous assessment and examinations. If a student opts to take the examinations, they will receive a transcript of their results from the Centre for Talented Youth.

Please note that the nature of this programme means grades obtained through examination will not be stored by Dublin City University. They will however be retained by CTYI. If the exam taken was the same, and the student

decides to return to that degree programme (or a degree programme that shares that module), Post-Leaving Certificate, they may be able to apply to their particular School for exemptions from these modules. These credits may only be redeemed on relevant DCU degree programmes, are not transferable to any other third level institution, and their redemption is entirely at the discretion of the school involved.

It should also be noted that participation on the Early University Entrance Programme does not entitle students to a place on an associated degree programme upon completion of the Leaving Certificate. Students wishing to return to that degree programme must apply through the CAO.

Academic Arrangements

Student Enrolment

Early Entrants will be registered as CTYI students, not DCU students.

Lecture Attendance

Students are required to attend all scheduled lectures. Lecture attendance will be monitored by CTYI. Parents/students will be expected to call/email the office if they are unable to attend class.

Course Delivery and Online Components

Each module will be supported by content on the Google Classroom platform, including copies of lecture slides and notes, useful links, class discussion forums, and further resources.

Course Makeup

There will be a limited number of places available on each of the Early University Entrance courses. Please be aware that some course places will be more limited than others due to lab restrictions, etc.

Student Difficulties

Parents are asked to contact the office in the event of their child experiencing any difficulty; academic, social or otherwise.

Day to Day Arrangements

Non-Attendance

In the event that the student is unable to attend on a given day, they or their parent must contact the office.

Non-Academic Help and Assistance

Ms Marie Mellett, Ms Cathy Woods and Ms Hazel Skinner will be available to the Early Entrants during the week for support. Where a student is experiencing difficulties on the Programme, they, their parent/guardian or their school are advised to contact us immediately.

Discipline

The Early University Entrance Programme demands the same standards of behaviour, one would normally find in a caring, well-organised home. Honesty, cooperation and respect will be expected from all students. Rules concerning student conduct will be explained at the beginning of the Programme. Our rules are for the safety and well-being of all students and we ask both parents and students to cooperate fully with the Programme.

Insurance

Students of CTYI are covered by Dublin City University's public liability insurance policy while in the care of CTYI. This cover does not extend to students who leave campus without permission or without a staff member in attendance. Previous CTYI students may not visit current students during the programme. A student who has been dismissed from the programme will no longer be the responsibility of Dublin City University or of CTYI once their parent/guardian or a person nominated by them for that purpose has been notified of the impending dismissal and given reasonable time to make arrangements to collect the student.

Policies

DCU's Child Protection Policy can be viewed at: dcu.ie/policies/child-protection-dcu-policies-and-procedures

Details of CTYI Data Protection, Anti-Bullying, Garda Vetting and Equality policies can be viewed at: dcu.ie/ctyi/ctyi-policies

Research

Like the original Early University Entrance programme, it is intended that some research will be carried out on the effectiveness of the programme along with its impact on its participants. Full details of the planned research will be outlined during induction.

Application Procedure

Applicants must prove that they are sufficiently motivated and ready to undertake learning in a real university environment. The letter of motivation and school recommendations are included in the application pack so that students can present their desire to participate as fully as possible. As spaces are limited on the programme, it is important that applicants take this opportunity to present themselves as worthy candidates for the programme.

How do I Apply?

Candidates should complete the application form accompanying this information brochure. Applicants should refer to the checklist below to ensure that their application contains all of the necessary information. The closing date for receipt of applications is **Friday, 17th May 2024**.

Application Checklist

Please ensure that your application includes the following information:

- Completed Application Form
- €200 Registration Fee
- Recommendations submitted to teachers for completion
- Signed parent and student consent forms
- Copy of recent school grades
- Copy of Psychologist's report, if requested

Brochures not received

If you know a CTYI student who is in Transition Year during the 2024-25 academic year and has not received this information pack, please ask them to contact 01 700 5634 or ctyi@dcu.ie

Recommendations

You must have two recommendations from teachers at your school. Recommendations should if possible be completed by teachers of subjects relevant to your subject (eg Maths/ Science teacher for Engineering, English/ History for Law etc). Recommendations should be posted separately. They should be forwarded by your referees to:

**Early University Entrance Programme
Centre for Talented Youth, Ireland
Dublin City University
Dublin 9**

Please note that Teacher Recommendations may follow your application. Make sure to get your application form in first and we will contact you if your recommendations have not been returned.

Once we Receive your Application

We aim to send course offers by post approximately 4 weeks after the closing date. Details of orientation days will be included in course acceptance packs. Please bear in mind we receive an increasingly high number of applications each year so unfortunately we cannot guarantee dates for course offers.

Application Timeline

Closing Date for Applications.....Friday, 17th May 2024

Balance of Fees.....Friday, 2nd August 2024

Lectures begin.....Week beginning Monday 2nd September 2024

Terms and Conditions

Registration Fee

All fees include a €200 registration fee, which is non-refundable for courses accepted. Please note, your child's application will be suspended until the payment has been processed.

Course Allocations

All communication relating to course allocations is communicated by Post. Please do not call the office as we cannot share this information by any other means.

Fees are non-transferable.

CTYI reserves the right to cancel or alter any course, if due to unforeseen circumstances the course cannot be run economically or efficiently.

Important to Note

Students who violate programme rules or policies are subject to the disciplinary actions outlined at the beginning of the programme. No refunds will be made to students dismissed from the programme. Students and their families will be billed for any damage they cause. Any student who has been dismissed from the Programme will not be permitted to take end of semester examinations.

Refunds

Written requests for a refund of Application Fees received up to and including 2nd August will be considered. After this date there will be no refund of Application Fees.

Refunds are only provided where a course does not take place or where a course is full. No refunds will be offered in the event of the course moving online due to public health guidelines or a university directive. Refunds are not given if the student withdraws from the programme having been offered a place on one of their course choices.

The €200 Registration fee is non-refundable for courses accepted.

Policies

DCU's Child Protection Policy can be viewed at: dcu.ie/policies/child-protection-dcu-policies-and-procedures

Details of CTYI Data Protection, Anti-Bullying, Garda Vetting and Equality policies can be viewed at: dcu.ie/ctyi/ctyi-policies









Contact Us

Marie Mellett

EUE Programme Organiser
marie.mellett@dcu.ie
+353 1 700 8423

Ms Hazel Skinner

EUE Administrator
hazel.skinner@dcu.ie
+353 1 700 5598

Ms Cathy Woods

EUE Administrator
cathy.woods@dcu.ie
+353 1 700 7031

Dr Colm O'Reilly

CTYI Director
colm.oreilly@dcu.ie

CTY Ireland

Main Office
ctyi@dcu.ie
+353 1 700 5634

Closing Date for Applications

Friday 17th May 2024

Post Applications to:

Early University Entrance Programme
CTY Ireland
Dublin City University
Dublin 9

